

**ASHFORD
& MOULT**
ESTATE AGENTS



ASKING PRICE

£280,000

Leslie Grove

Nottingham, NG14 6GL

**ASHFORD
& MOULT**
ESTATE AGENTS

PROPERTY SUMMARY

Nestled in the tranquil cul-de-sac of Leslie Grove, Calverton, Nottingham, this charming two-bedroom detached bungalow offers a perfect blend of comfort and convenience. With a well-designed layout, the property features a welcoming reception room that provides an ideal space for relaxation and entertaining guests.

The bungalow boasts two spacious bedrooms, perfect for a couple or a small family for those seeking a peaceful retreat. The bathroom is thoughtfully appointed, ensuring both functionality and comfort.

One of the standout features of this property is the ample parking available, with a driveway that accommodates three to four vehicles, along with additional garage space. This is a rare find in a residential area, making it an excellent choice for those with multiple cars or who enjoy hosting visitors.

Situated close to local shops and amenities, residents will appreciate the ease of access to everyday necessities, enhancing the overall appeal of this delightful home. Whether you are a first-time buyer, looking to downsize, or seeking a serene place to live, this bungalow in Calverton is a wonderful opportunity not to be missed.

Call now to arrange a viewing!!

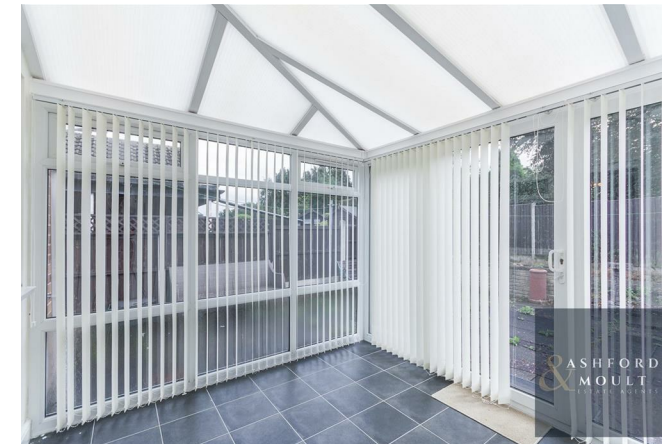
2



1



1



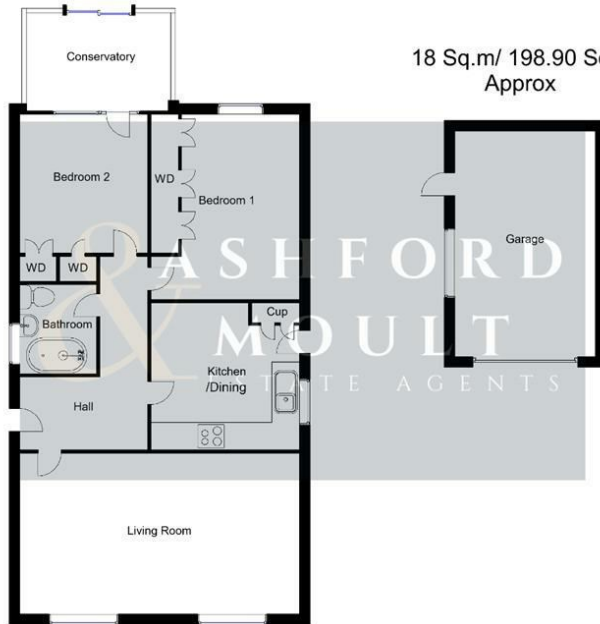


**ASHFORD
& MOULT**
ESTATE AGENTS





Ground Floor
80 Sq.m/ 856.04 Sq.ft
Approx



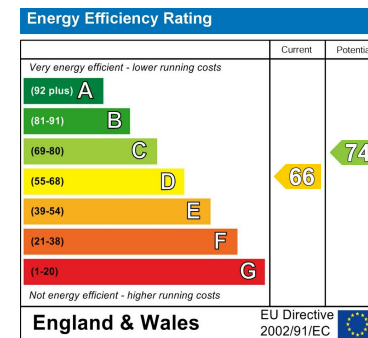
18 Sq.m/ 198.90 Sq.ft
Approx

LOCAL AUTHORITY
Gedling Borough Council

TENURE
Freehold

COUNCIL TAX BAND
C

VIEWINGS
By prior appointment only



Agents Note: Whilst every care has been taken to prepare these particulars, they are for guidance purposes only. All measurements are approximate and are for general guidance purposes only and whilst every care has been taken to ensure their accuracy, they should not be relied upon and potential buyers/tenants are advised to recheck the measurements

Whilst every attempt has been made to ensure the accuracy of the floor plan contained here, no responsibility is taken for incorrect measurements of doors, windows, appliances and room or any error, omission or misstatement. Exterior and interior walls are drawn to scale based on interior measurements. Any figure given is for initial guidance only and should not be relied on as basis of valuation. These plans are for marketing purposes only and should be used as such by any prospective purchase. Specially no guarantee is should not be relied on as a basis of valuation. These plans are for marketing purposes only and should be used as such by any prospective purchase. Specifically no guarantee is given on the total square footage of the property if quoted on this plan.
CC Ltd ©2018



OFFICE ADDRESS

56 Main Street
Calverton
Nottinghamshire
NG14 6FN

OFFICE DETAILS

0115 865 6675
sales@ashfordandmould.co.uk